

**A New Behaviour Procedure for
Beechwood School**

#TheBeechwoodWay

Mission statement:

To provide an exceptional educational experience for all, where potential is nurtured and responsible citizens created

Beechwood Values

Respect

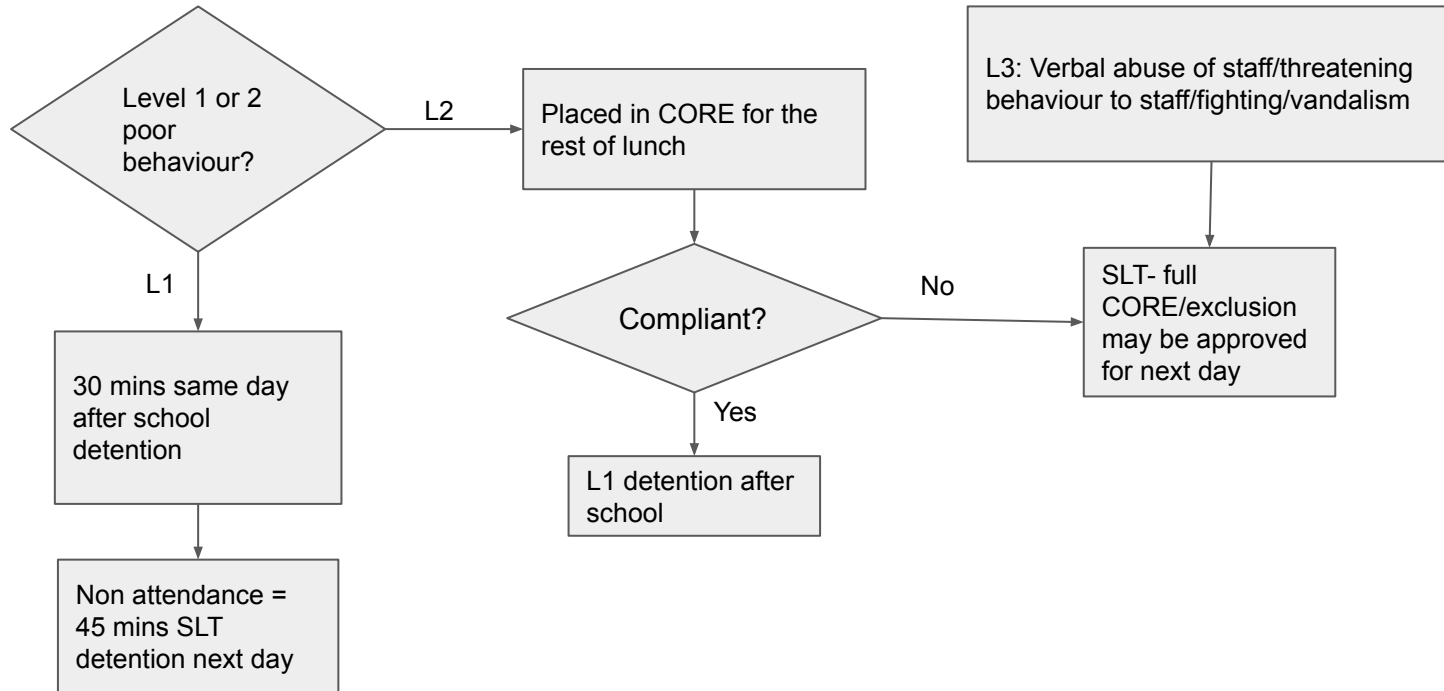
Excellence

Kindness

Rewards for doing the right things

- No BP (behaviour point) in lessons/break/lunch all week= an email home to parents at the end of every week
- No BP in a month = a certificate home to parents
- No BP in a half term = lunch with the headteacher
- All students with no BP at the end of a half term will be entered into a draw and 3 winners randomly selected. Each winner will receive a voucher worth £10
- We are keeping existing rewards for AP (Achievement point)

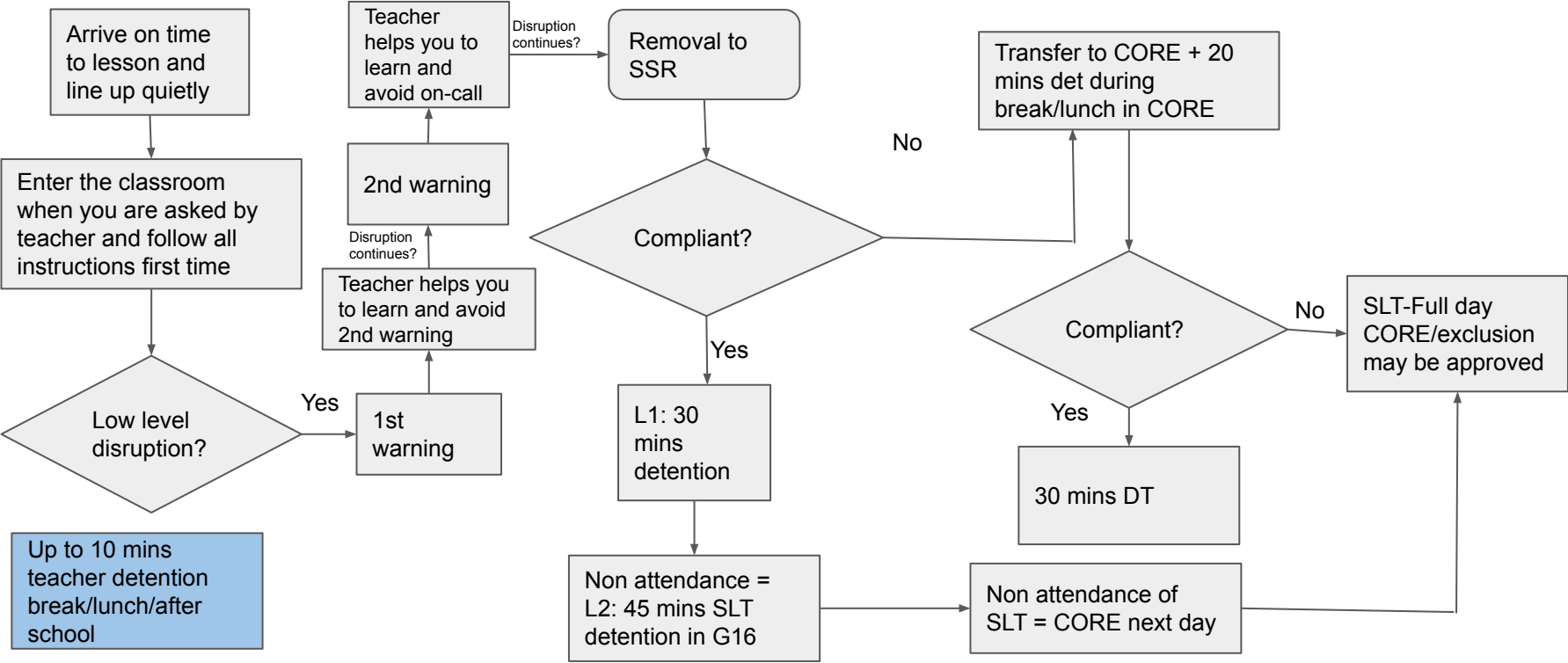
Corridor/Break/Lunch Behaviour Procedure



Behaviours and their consequences

Behaviour	Examples and consequences
Punctuality	You are late if you arrive after 8.40am to registration; 11.20am to lesson 3 and 14.00pm to lesson 5 (L1). You are late if you arrive 4 mins after the start of lessons 1, 2 and 4 (L1)
Not in lesson	Misuse of exit and toilet pass (L2); Walking out of lessons (L2); Truanting (half day in CORE); not where you are meant to be (L2)
Disrespect to staff	Walking away from staff (L2); Use of swear/rude words in conversations with your friends (L1); Use of swear words when talking to staff after being challenged or corrected (L2); Verbal abuse of staff (all day in CORE); refusal to put phone away (L1)
Dangerous behaviour	Play fighting (L2); Chasing or being chased indoors during lunch (L2); Winding up another student to get a reaction from them (L2); Wandering (L2); Loitering after school (L2); Fighting (CORE while we investigate/exclusion)
Racism/homophobia and acts of unkindness	CORE while we investigate
Uniform	Trainers/Fake nails/Jeans/Leggings- Only tutors to set L1

Classroom Behaviour Procedure



Use of exit card

- Student must tell the teacher before they use their exit card
- Teacher authorises exit from lesson
- Teacher presses on-call
- Walk colleague/SLT attends to student in the corridor and ascertains whether exit/toilet card is being used appropriately
- If pass is not being used appropriately, student is removed to SSR and L1 detention is set
- If student refuses SSR, they are transferred to CORE. Refusal of CORE may lead to exclusion.

Explanation of punctuality

Tutor time, lesson 3, lesson 5

- You are late if you arrive after 8.40am to registration; 11.20am to lesson 3 and 14.00pm to lesson 5
- The consequence is L1 same day. A text will be sent to your parents

Lessons 1, 2 and 4

- You are late if you arrive 4 mins after the start of lessons 1, 2 and 4
- The consequence is L1 same day. A text will be sent to your parents

If you have more than 1 detention in a day

- You will do all the detentions at once with a member of SLT next day after school (2 L1= 60 mins; 2 L2= 90 mins)
- Your parents will be informed by text at the end of the day, ready for next day
- Failure to attend will result in CORE next day
- Failure to attend CORE or failed CORE may result in exclusion

Detention code of conduct

- All students must line up outside the hall and wait quietly
 - Staff will show students where to sit
 - Any student that fails L1 detention is automatically L2 consequence the next day. CORE is the next stage if a student fails L2 detention
 - There is no warning system in detention
-
- To fail detention, a student will need to do the following; arrive at detention after 3.04pm, talks, uses phone, distracts others or attempt to, turns round, legs not under desk, refuses to complete reflection sheet, not lined up, talks while lined up outside.

Continued issues with compliance

- Students who consistently find it challenging to comply with our behaviour expectations will be reviewed and supported to change their behaviours.
- We will meet with them and gather information from staff and parents/carers to ensure we are working together to meet their additional needs.
- Students with existing support measures and amendments to their timetables will continue to be supported to do the right thing.

What may lead to suspension?

- Refusal to go to CORE/failing CORE
- Prejudices/intolerance including racism and homophobia
- Malicious and unfounded accusations against staff
- Sexual harassment or sexual assault
- Theft
- Abusive, threatening or violent behaviour towards students and staff
- Possession/use of drugs, alcohol, cigarettes or other illegal substances
- Possession of a knife or weapon